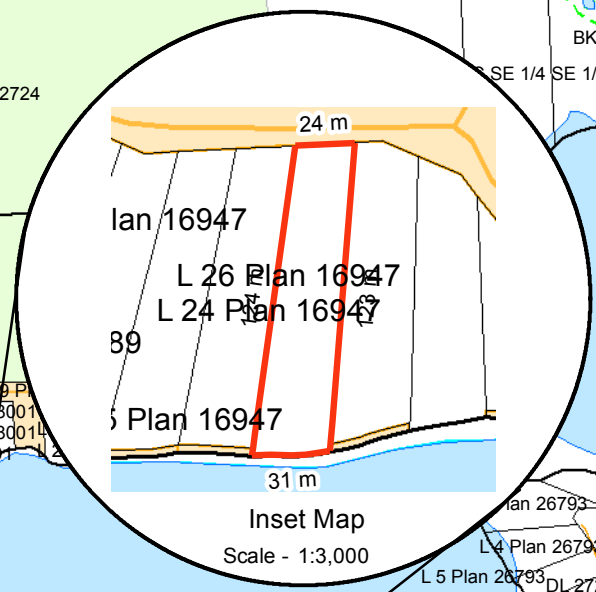
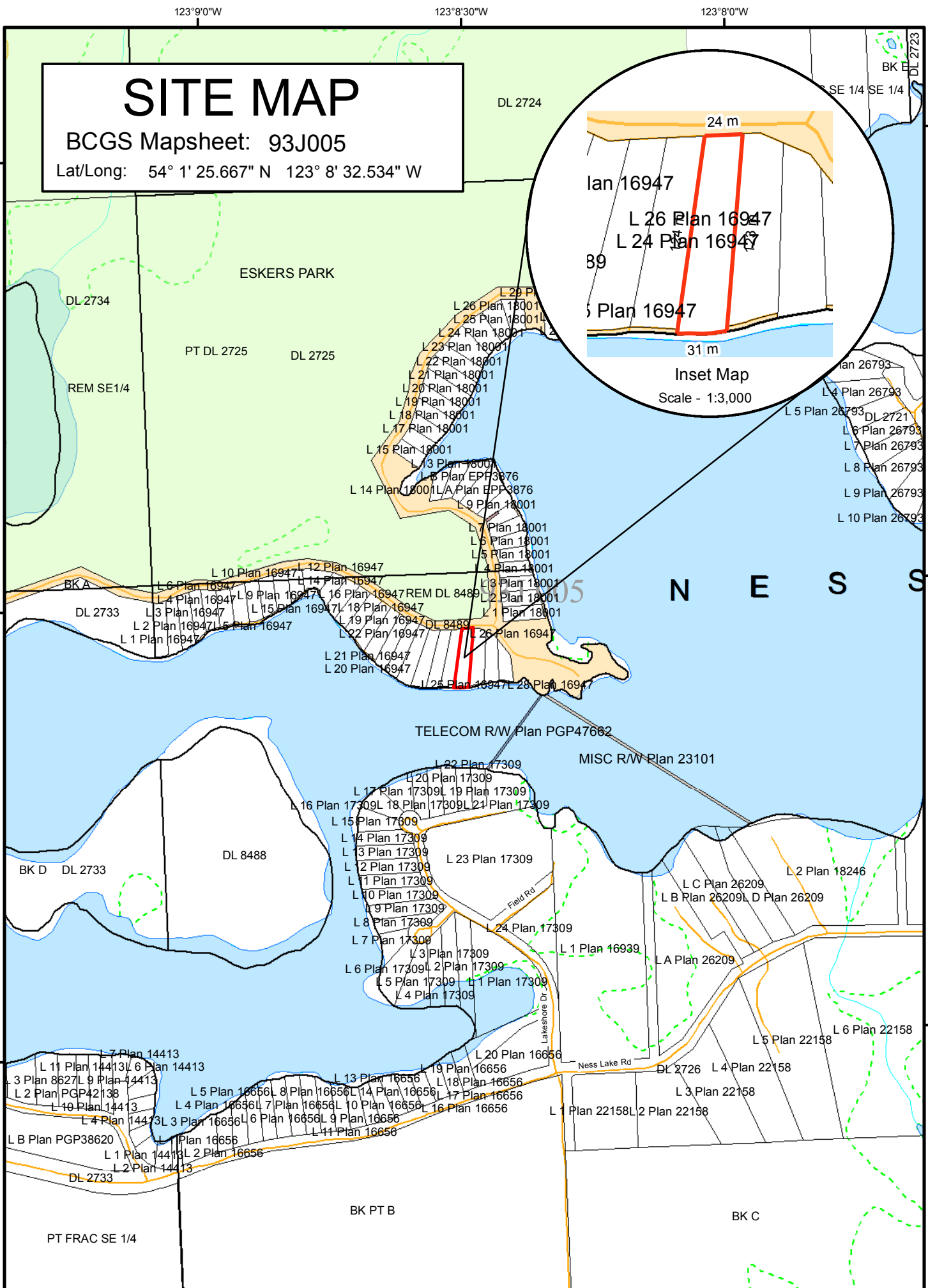


# SITE MAP

BCGS Mapsheet: 93J005

Lat/Long: 54° 1' 25.667" N 123° 8' 32.534" W



File Number: 0278339

Site # 1 of 1 - APPLICATION Area = 0.33 Ha.

TYPE: CROWN GRANT

PURPOSE: RESIDENTIAL

SUBTYPE: DIRECT SALE

SUBPURPOSE: RECREATIONAL RESIDENTIAL

LOCATION: NESS LAKE

IMAGERY: N/A

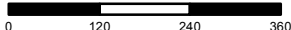
Produced by  
Ministry of Forests, Lands &  
Natural Resource Operations  
& Rural Development  
Northern Service Centre  
FrontCounterBC  
Date: March 16, 2018

Scale: 1:10,000

\* if printed on 8.5X14 page

Projection: BC Albers  
Datum: NAD 83

Meters



## Legend

- |                                 |                                     |
|---------------------------------|-------------------------------------|
| Crown Land Application          | Provincial Park                     |
| Primary Survey Parcel           | Protected Area                      |
| Subdivision                     | OIC Ecological Reserve              |
| Municipality                    | Recreation Area                     |
| <b>Surveyed Rights of Way</b>   | <b>Base Mapping Features (20K)</b>  |
| Surveyed Road R/W               | River or Stream                     |
| Gas/Oil R/W District Lot        | River or Stream - Dry               |
| Power Transmission R/W          | Lake                                |
| Gas/Oil R/W                     | Reservoir - Definite                |
| Gas/Oil R/W District Lot        | Glacier/Icefield                    |
| Miscellaneous R/W               | Contour - 20m interval              |
| <b>Transportation Corridors</b> | <b>Transportation - Lines (20K)</b> |
| Highway                         | Airfield                            |
| Railway                         | Road                                |
| Surveyed Road R/W               | Forest Service Road                 |
|                                 | Road Permit                         |
|                                 | Trail                               |
|                                 | Rail Line                           |

All measurements are approximate.

