

122°45'30"W

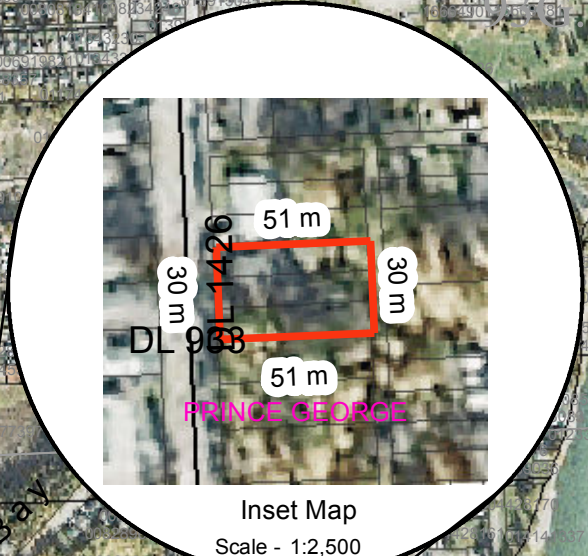
122°45'0"W

122°44'30"W

SITE MAP

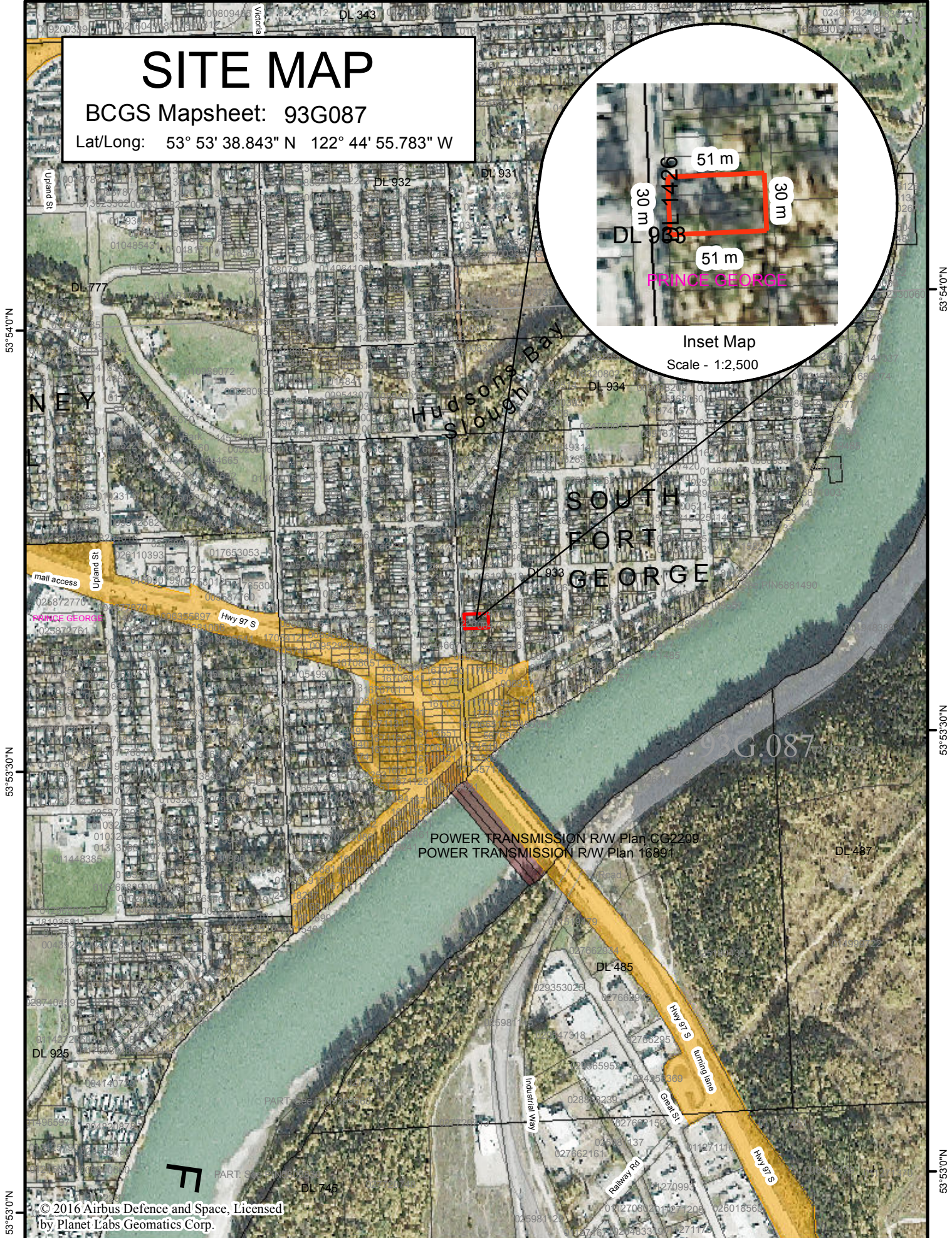
BCGS Mapsheet: 93G087

Lat/Long: 53° 53' 38.843" N 122° 44' 55.783" W



Inset Map

Scale - 1:2,500



© 2016 Airbus Defence and Space, Licensed by Planet Labs Geomatics Corp.

File Number: 7402543

Site # 1 of 1 - APPLICATION Area = 0.16 Ha.

TYPE: CROWN GRANT PURPOSE: RESIDENTIAL

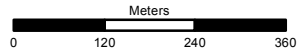
SUBTYPE: DIRECT SALE SUBPURPOSE: URBAN RESIDENTIAL

LOCATION: NORWOOD STREET IMAGERY: Spot 6/7 - 2014-2015

Produced by
Ministry of Forests, Lands &
Natural Resource Operations
& Rural Development
Northern Service Centre
FrontCounterBC
Date: April 19, 2018

Scale: 1:10,000 *
* if printed on 8.5X14 page

Projection: BC Albers
Datum: NAD 83



Legend

- Crown Land Application
- Primary Survey Parcel
- Subdivision
- Municipality
- Surveyed Rights of Way**
 - Surveyed Road R/W
 - Gas/Oil R/W District Lot
 - Power Transmission R/W
 - Gas/Oil R/W
 - Telecom R/W District Lot
 - Miscellaneous R/W
- Transportation Corridors**
 - Highway
 - Railway
 - Surveyed Road R/W
- Protected Areas**
 - Provincial Park
 - Protected Area
 - OIC Ecological Reserve
 - Recreation Area
- Base Mapping Features (20K)**
 - River or Stream
 - River or Stream - Dry
 - Lake
 - Reservoir - Definite
 - Glacier/Icefield
 - Contour - 20m interval
- Transportation - Lines (20K)**
 - Airfield
 - Road
 - Forest Service Road
 - Road Permit
 - Trail
 - Rail Line

All measurements are approximate.

