



envirowest consultants inc.

Suite 101 - 1515 Broadway Street
Port Coquitlam, British Columbia
Canada V3C 6M2
604-944-0502

March 7, 2018

FrontCounter BC
South Coast Region
Ministry of Forests, Lands and
Natural Resource Operations
200 – 10428 153 Street
Surrey, BC V3R 1E1

Attention: Hideki Eto
Natural Resource Specialist

MFLNRO File No. 2005911

Dear Mr. Eto,

RE: PROPOSED DEVELOPMENT AT 6303 RIVER ROAD, DELTA
Addendum – Crown Land Tenure Application at Big Hart and Little Hart Islands

This correspondence represents an Addendum to previously-submitted correspondence from Envirowest, in support of Crown Land Tenure at Big Hart and Little Hart Islands in conjunction with proposed residential development at 6303 River Road. The following correspondence from Envirowest has already been submitted to the Ministry of Forests, Lands and Natural Resource Operations (MFLNRO):

- Nilson to FrontCounter BC. “Crown Land Tenure Application – Management Plan” (September 27, 2017) and
- Envirowest Consultants Inc. “Application for Water Sustainability Act Change Approval. Proposed Fill Replacement and Pier Construction in Deas Slough. 6303 River Road, Delta” (February 15, 2018).

The second document referenced above represents updated information required for the Change Approval Application being concurrently reviewed by MFLNRO along with this Tenure Application. This Addendum summarizes the updated changes that are relevant to the review of the Tenure Application. The following relevant changes to works within Big Hart and Little Hart Island were made:

- Two channels on Big Hart Island, previously referred to as Channels C and D will no longer be constructed. Both channels would require impacting existing intertidal marsh habitat. It was decided not to construct those channels and leave existing habitat.
- Instead, remaining Channels A and B within Big Hart Island, and Channel 1 within Little Hart Island were widened.
- Grading of the mounds was modified, however the overall footprint of each mound was not significantly modified.

Updated outlines of proposed works on Little Hart and Big Hart Islands are included as Figures 4 and 5, respectively (Attachment A). Overall areas of occupation (identified within red boxes in Figures 4 and 5) are 14,744 square metres (m²) on Little Hart Island, and 18,519 m² on Big Hart Island.

Please contact me at 604-944-0502 or gibson@envirowest.ca should you have comments or questions regarding this Addendum.

Sincerely,
ENVIROWEST CONSULTANTS INC.

A handwritten signature in black ink, appearing to read 'Christie Gibson', is written over a light gray rectangular background.

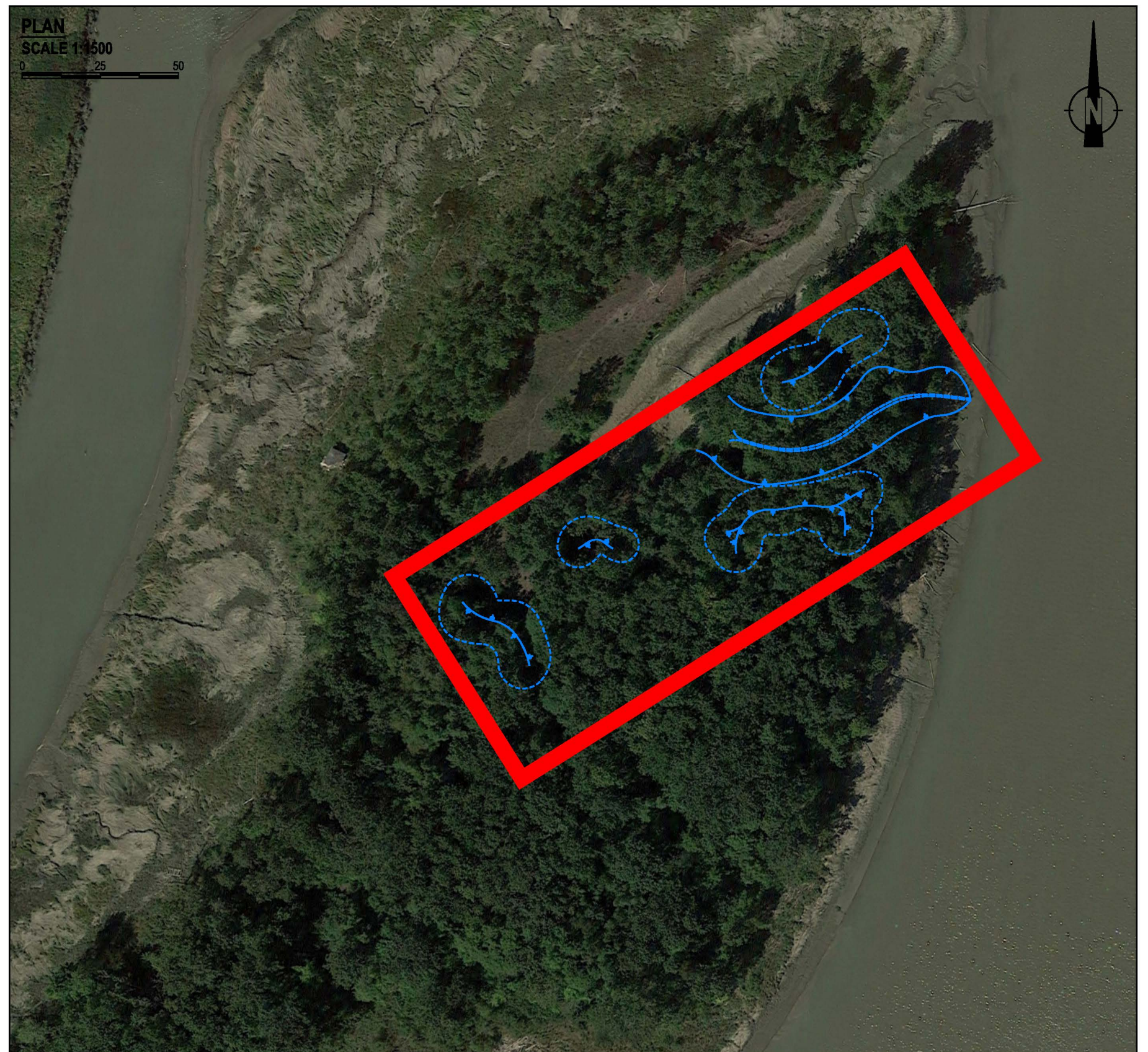
Christie Gibson, R.P.Bio.
Biologist

CWG

Attach.

Copy: Mr. Kenny Kyan, Kyan Management Corporation
 Mr. Mark Adams, Envirowest Consultants Inc.

ATTACHMENT A
Envirowest Figures

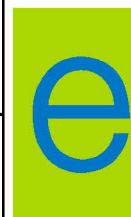


REFERENCE DRAWINGS

1. Drawing No. 1579-02-03. "Compensation Habitats General Grade Plan". March 08, 2013. Envirowest Consultants Inc.
2. Drawing No. 360-05-07. "Compensation Habitats General Grade Plan". July 20, 2006. Envirowest Consultants Inc.
3. "MAY 03 TOPD". May 04, 2004. Fraser River Pile & Dredge Ltd.
4. 2016 Topography From City of Delta Website (<http://deltamap.delta.ca>).
5. 2001 Ortho Photograph From McElhanney Consulting Services Ltd.
6. 2016 Ortho Photograph From Google Earth.

KENNY KYAN

6303 RIVER ROAD
Delta, BC



envirowest consultants inc.

Suite 101 - 1515 Broadway Street
Port Coquitlam, British Columbia
Canada V3C 6M2
office: 604-944-0502
facsimile: 604-944-0507

www.envirowest.ca

LITTLE HART ISLAND SITE PLAN

DESIGN: MAA/CG	DRAWN: SDJ	CHECKED: MAA	REVISION: 02	REVISION DATE: March 06, 2018
SCALE: As Shown			DRAWING NUMBER: FIGURE 4	
DATE: September 11, 2017				



REFERENCE DRAWINGS
1. 2016 Topography From City of Delta Website (<http://deltamap.delta.ca>).
2. 2001 Ortho Photograph From McElhanney Consulting Services Ltd.
3. 2016 Ortho Photograph From Google Earth.

KENNY KYAN

6303 RIVER ROAD
Delta, BC



envirowest consultants inc.

Suite 101 - 1515 Broadway Street
Port Coquitlam, British Columbia
Canada V3C 6M2
office: 604-944-0502
facsimile: 604-944-0507

www.envirowest.ca

**BIG HART ISLAND
SITE PLAN**

DESIGN: MAA/CG	DRAWN: SDJ	CHECKED: MAA	REVISION: 02	REVISION DATE: March 06, 2018
SCALE: As Shown	DRAWING NUMBER: FIGURE 5			
DATE: September 11, 2017				