

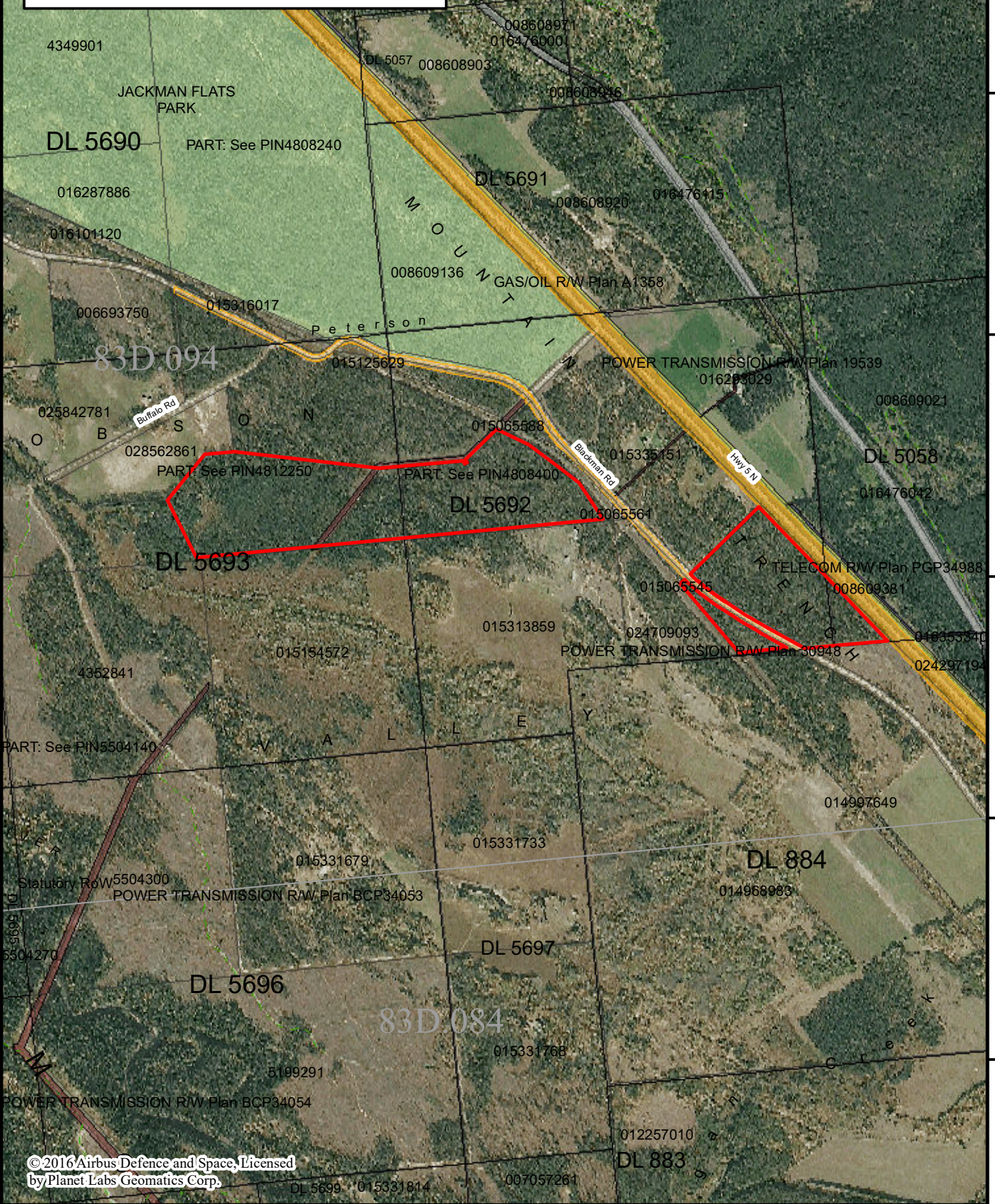
119°23'0"W 119°22'30"W 119°22'0"W 119°21'30"W 119°21'0"W 119°20'30"W 119°20'0"W

52°56'0"N 52°55'30"N 52°55'0"N 52°54'30"N 52°54'0"N 52°53'30"N

52°56'0"N 52°55'30"N 52°55'0"N 52°54'30"N 52°54'0"N 52°53'30"N

SITE MAP

BCGS Mapsheet: 83D094
 Lat/Long: 52° 54' 41.793" N 119° 21' 38.679" W



©2016 Airbus Defence and Space, Licensed by Planet Labs Geomatics Corp.

File Number: 7410009

Site # 1 of 1 - APPLICATION Area = 71.45 Ha.

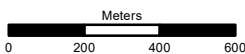
TYPE: CROWN GRANT PURPOSE: AGRICULTURE
 SUBTYPE: DIRECT SALE SUBPURPOSE: EXTENSIVE
 LOCATION: BLACKMAN ROAD IMAGERY: Spot 2014-2015

Produced by
 Ministry of Forests, Lands &
 Natural Resources Operations
 Northern Service Centre
 FrontCounterBC
 Date: June 14, 2018

Scale: 1:20,000 *

* if printed on 8.5X14 page

Projection: BC Albers
 Datum: NAD 83



Legend

- | | |
|---------------------------------|-------------------------------------|
| Crown Land Application | Protected Areas |
| Primary Survey Parcel | Provincial Park |
| Subdivision | Protected Area |
| Municipality | OIC Ecological Reserve |
| Surveyed Rights of Way | Recreation Area |
| Surveyed Road R/W | Base Mapping Features (20K) |
| Gas/Oil R/W District Lot | River or Stream |
| Power Transmission R/W | River or Stream - Dry |
| Gas/Oil R/W | Lake |
| Telecom R/W District Lot | Reservoir - Definite |
| Miscellaneous R/W | Glacier/Icefield |
| Transportation Corridors | Contour - 20m interval |
| Highway | Transportation - Lines (20K) |
| Railway | Airfield |
| Surveyed Road R/W | Road |
| | Forest Service Road |
| | Road Permit |
| | Trail |
| | Rail Line |

All measurements are approximate.