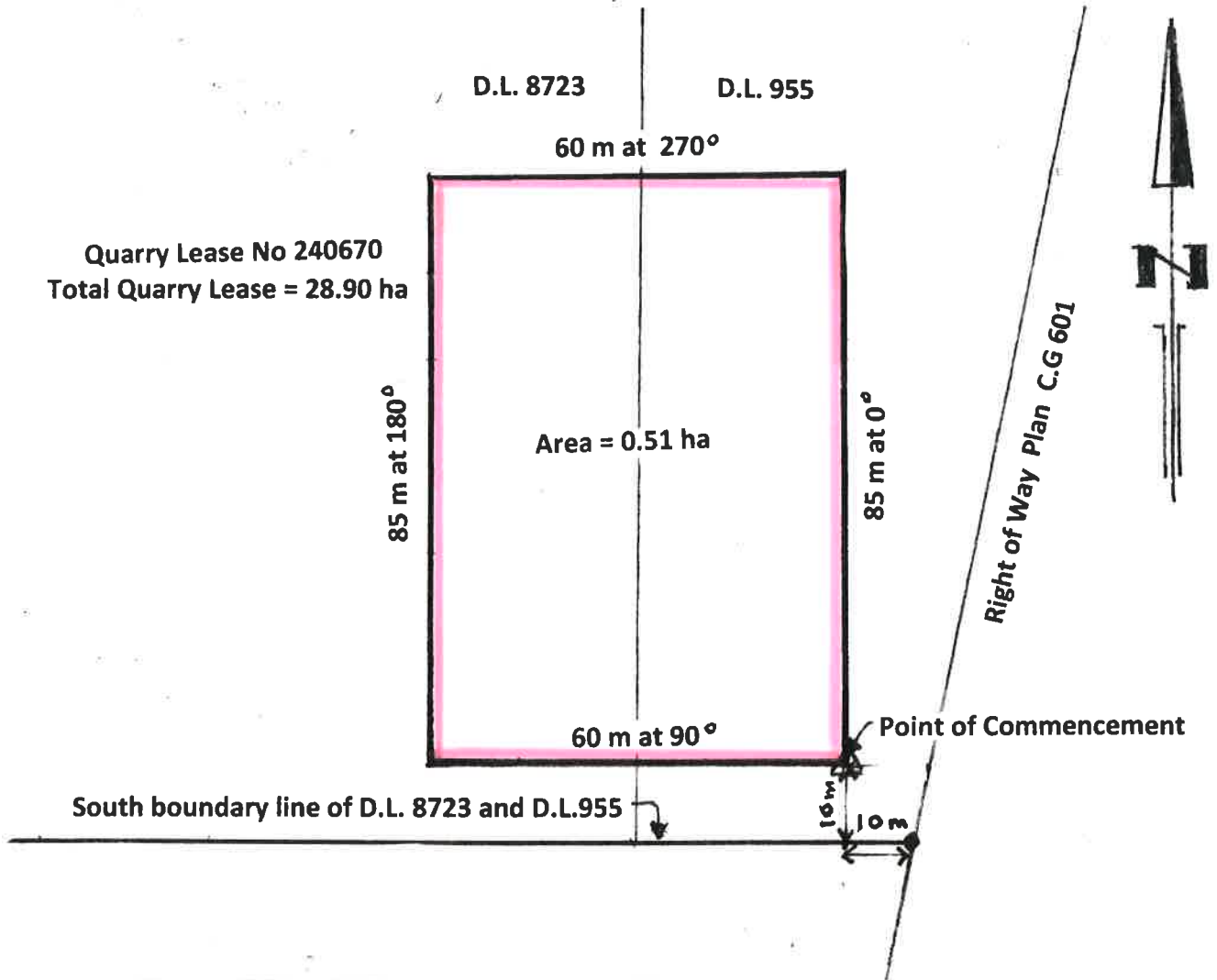
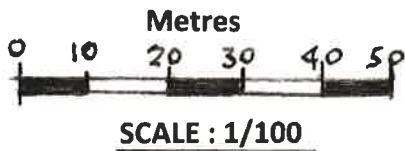


COAST AGGREGATES LTD
SITE MAP OF THE PROPOSED CONCRETE BATCH PLANT ON QUARRY LEASE No 240670

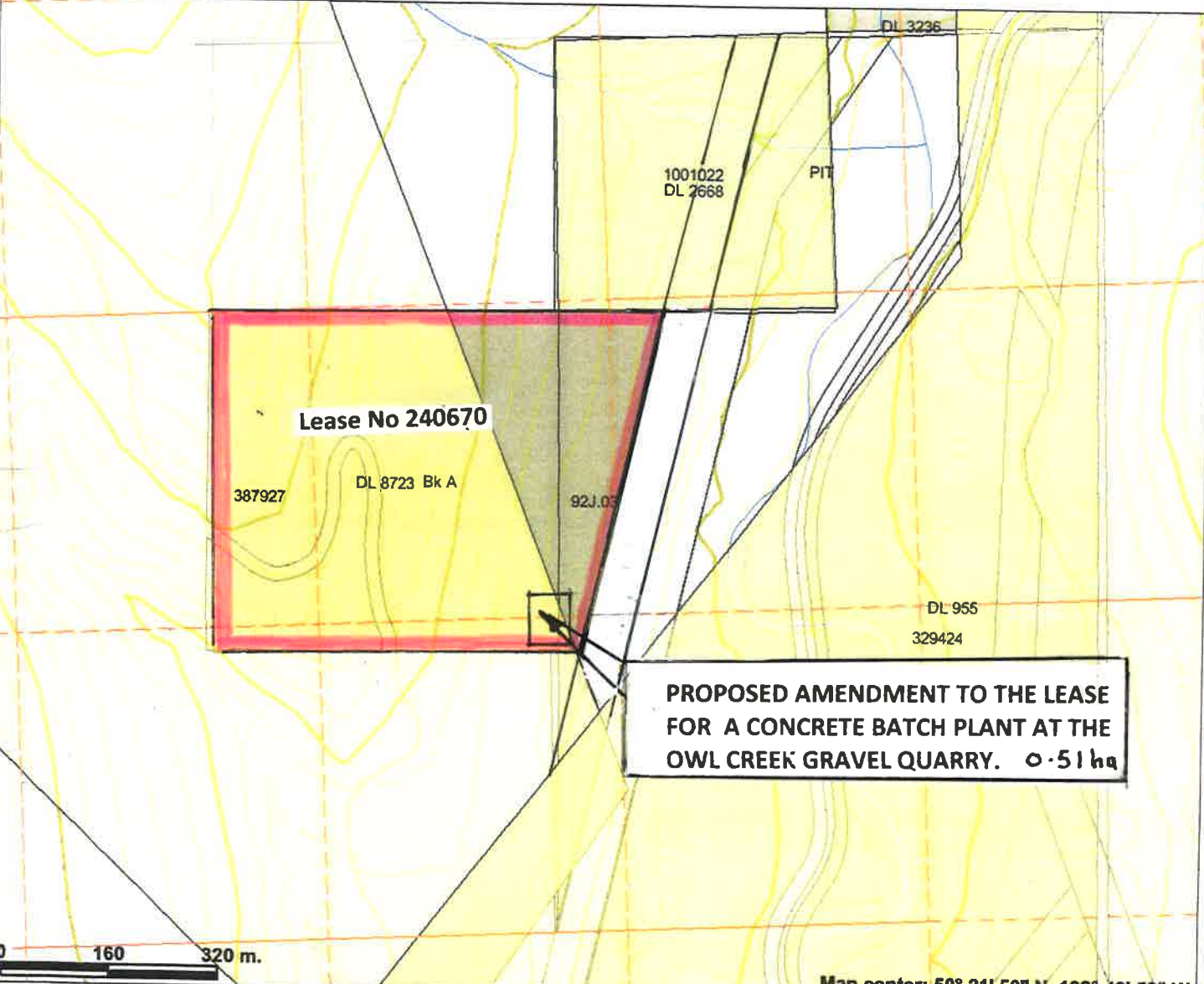


Commencing at a point 10 m west and 10 m north of the South East corner of D.L.955 where it meets with the Right of Way Plan C.G. 601:

go north at 0 degrees for 85 m then go west at 270 degrees for 60 m then south at 180 degrees for 85 m then go east at 90 degrees for 60 m.



Internet Mapping Framework



Legend

- Indian Reserves
- National Parks
- Conservancy Areas
- Parks
- MTO Grid (MTO)
- Blocked by MEM
- Other
- Mineral Tenure (current)
 - Mineral Claim
 - Mineral Lease
 - Mineral Reserves (current)
- Placer Claim Designation
- Placer Lease Designation
- No Staking Reserve
- Conditional Reserve
- Release Required Reserve
- Surface Restriction
- Recreation Area
- Others
- Integrated Cadastral Fabric
- Survey Parcels
- BCGS Grid
- Contours (TRIM)
 - Contour - Index
 - Contour - Index.Indefinite
 - Contour - Index.Depression
 - Contour - Index.Depression Indefinite
 - Contour - Intermediate
 - Contour - Intermediate.Indefinite
 - Contour - Intermediate.Depression
 - Contour - Intermediate.Depression Indefinite
- Area of Exclusion

Map center: 50° 21' 50" N, 122° 43' 58" W

Scale: 1:8,936



This map is a user generated static output from an Internet mapping site and is for general reference only. Data layers that appear on this map may or may not be accurate, current, or otherwise reliable. THIS MAP IS NOT TO BE USED FOR NAVIGATION.

COAST AGGREGATES LTD

SITE MAP