

124°23'0"W

124°22'30"W

124°22'0"W

124°21'30"W

53°59'0"N

53°58'30"N

53°58'0"N

53°59'0"N

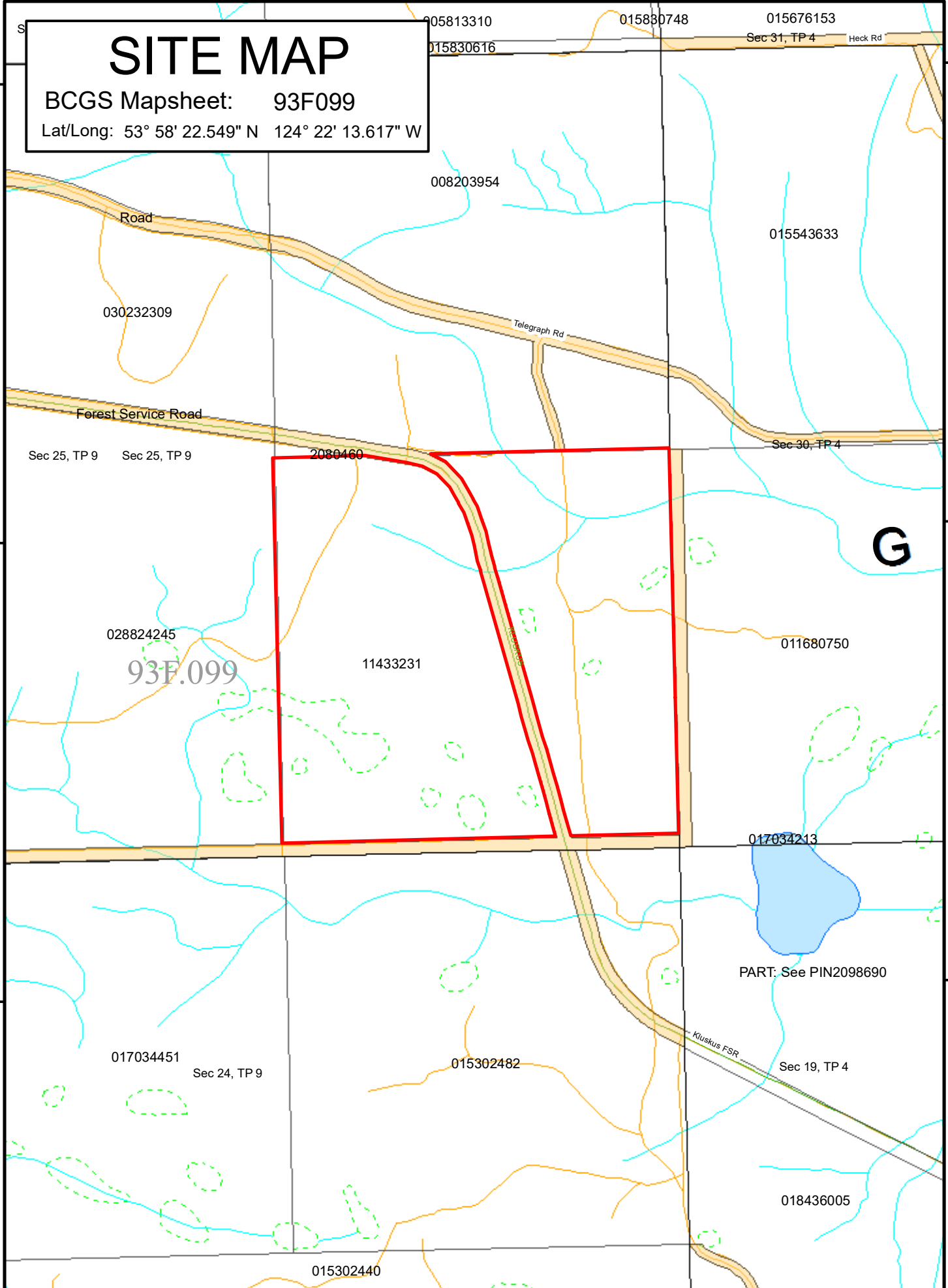
53°58'30"N

53°58'0"N

SITE MAP

BCGS Mapsheet: 93F099

Lat/Long: 53° 58' 22.549" N 124° 22' 13.617" W



File Number: 7410012

Site # 1 of 1 - APPLICATION

Area = 60.23 Ha.

TYPE: CROWN GRANT

PURPOSE: AGRICULTURE

SUBTYPE: DIRECT SALE

SUBPURPOSE: EXTENSIVE

LOCATION: Tachick Lake

IMAGERY: N/A

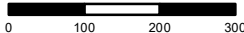
Produced by
 Ministry of Forests, Lands &
 Natural Resource Operations
 Northern Service Centre
 FrontCounterBC
 Date: July 3, 2018

Scale: 1:10,000 *

* if printed on 8.5X14 page

Projection: BC Albers
Datum: NAD 83

Meters



Legend

- | | |
|---------------------------------|-------------------------------------|
| Crown Land Application | Protected Areas |
| Primary Survey Parcel | Provincial Park |
| Subdivision | Protected Area |
| Municipality | OIC Ecological Reserve |
| Surveyed Rights of Way | Recreation Area |
| Surveyed Road R/W | Base Mapping Features (20K) |
| Gas/Oil R/W District Lot | River or Stream |
| Power Transmission R/W | River or Stream - Dry |
| Gas/Oil R/W | Lake |
| Telecom R/W District Lot | Reservoir - Definite |
| Miscellaneous R/W | Glacier/Icefield |
| Transportation Corridors | Contour - 20m interval |
| Highway | Transportation - Lines (20K) |
| Railway | Airfield |
| Surveyed Road R/W | Road |
| | Forest Service Road |
| | Road Permit |
| | Trail |
| | Rail Line |

All measurements are approximate.