

121°56'30"W

121°56'0"W

121°55'30"W

121°55'0"W

53°55'0"N

53°54'30"N

53°54'0"N

53°54'30"N

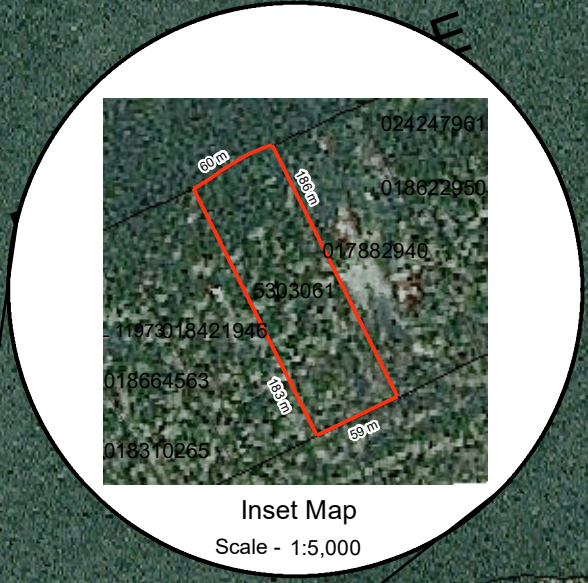
53°54'0"N

PURDEN LAKE PARK

SITE MAP

BCGS Mapsheet: 93H091

Lat/Long: 53° 54' 19.933" N 121° 55' 55.965" W



93H.091

93H.081

Prince George Hwy 16 E

© 2016 Airbus Defence and Space, Licensed by Planet Labs Geomatics Corp.

File Number: 0233067

Site # 1 of 1 - APPLICATION Area = 1.103 Ha.

TYPE: CROWN GRANT

PURPOSE: RESIDENTIAL

SUBTYPE: DIRECT SALE

SUBPURPOSE: RECREATIONAL RESIDENTIAL

LOCATION: PURDEN LAKE

IMAGERY: Spot - 2014-2015

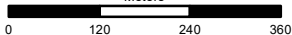
Produced by
Ministry of Forests, Lands &
Natural Resource Operations
& Rural Development
Northern Service Centre
FrontCounterBC
Date: July 4, 2018

Scale: 1:10,000 *

* if printed on 8.5X14 page

Projection: BC Albers
Datum: NAD 83

Meters



Legend

- | | |
|---------------------------------|-------------------------------------|
| Crown Land Application | Protected Areas |
| Primary Survey Parcel | Provincial Park |
| Subdivision | Protected Area |
| Municipality | OIC Ecological Reserve |
| Surveyed Rights of Way | Recreation Area |
| Surveyed Road R/W | Base Mapping Features (20K) |
| Gas/Oil R/W District Lot | River or Stream |
| Power Transmission R/W | River or Stream - Dry |
| Gas/Oil R/W | Lake |
| Telecom R/W District Lot | Reservoir - Definite |
| Miscellaneous R/W | Glacier/Icefield |
| Transportation Corridors | Contour - 20m interval |
| Highway | Transportation - Lines (20K) |
| Railway | Airfield |
| Surveyed Road R/W | Road |
| | Forest Service Road |
| | Road Permit |
| | Trail |
| | Rail Line |

All measurements are approximate.