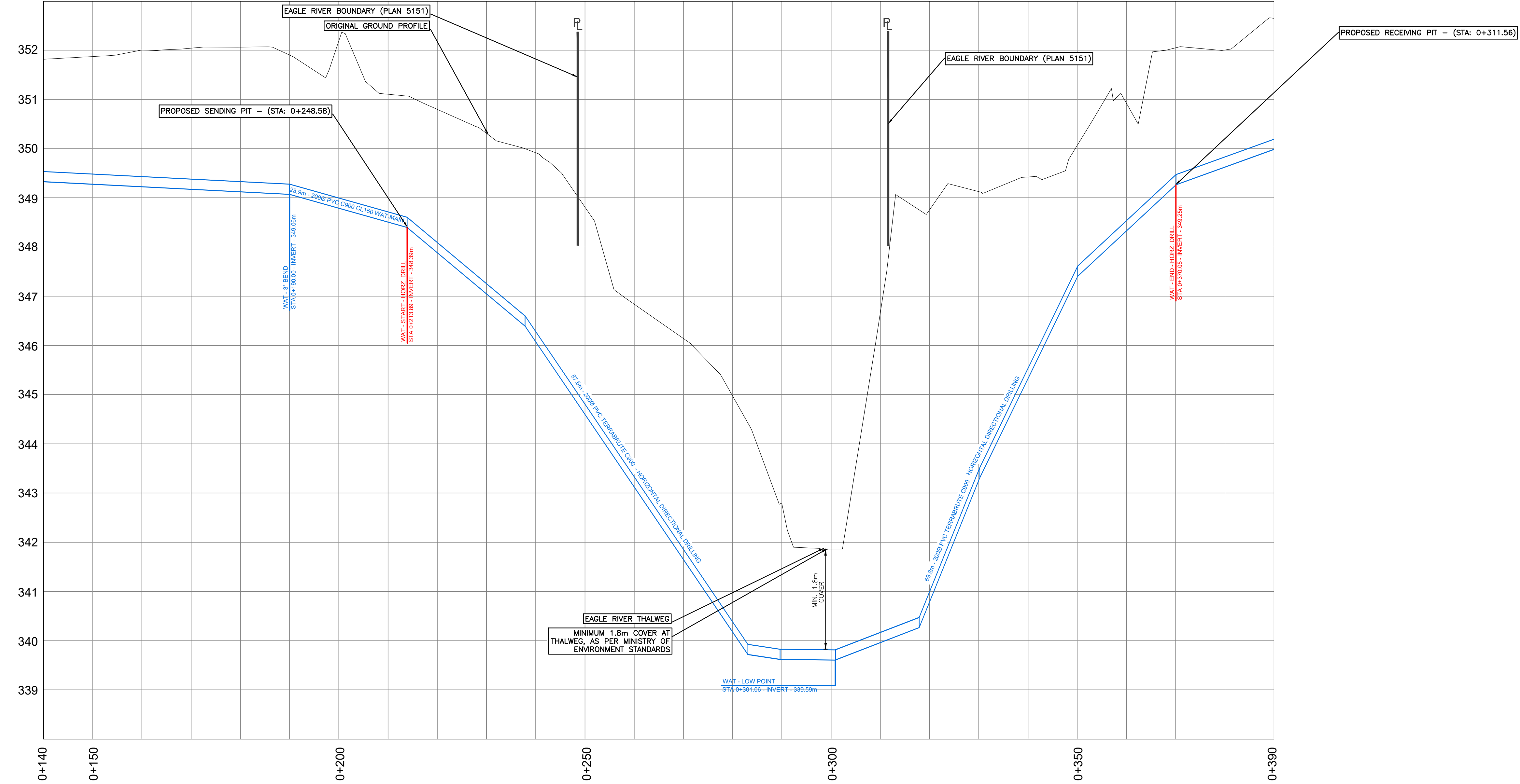
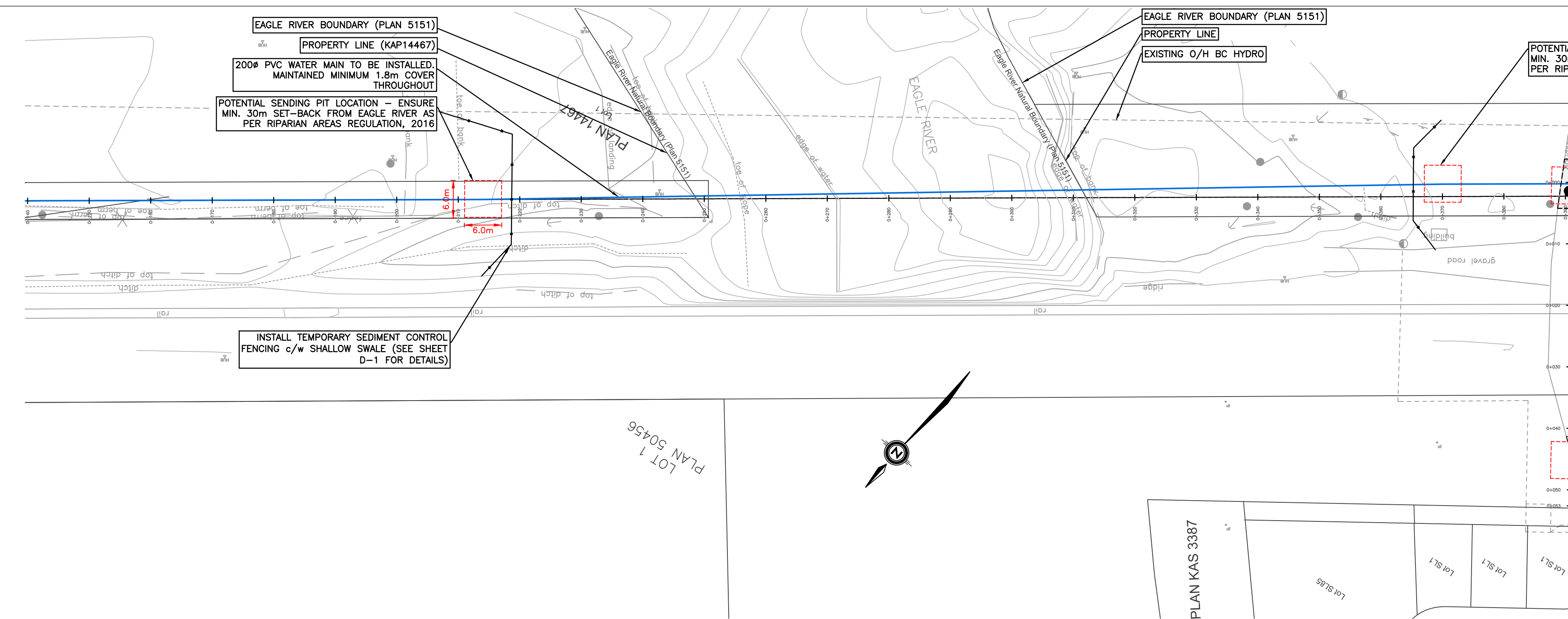


PLOT: July 23, 2018 COMPUTER: 1-2; PROJECTS\91\2 - HILLIER TO SILVER SANDS; DRAWINGS\AUTOCAD\91\2 - HILLIER TO SILVER SANDS - DESIGN BACKUP; AW.DWG (REF-DWG-NAMES)



**LEGEND**

**EXISTING**

- HYDRO/TELEPHONE POLE
- HYDRO/TELEPHONE POLE C/W DAVIT
- TELEPHONE POLE
- HYDRO POLE
- HYDRO POLE C/W TRANS.
- POST TOP STREET LIGHT
- GUY
- SANITARY MANHOLE
- STORM MANHOLE
- CATCHBASIN
- FIRE HYDRANT
- GATE VALVE
- SANITARY SEWER
- FORCE MAIN
- WATER MAIN
- GAS
- UNDERGROUND TELEPHONE
- FENCE
- DECIDUOUS/EVERGREEN
- HEDGE

**PROPOSED**

- SANITARY MANHOLE
- STORM MANHOLE
- CATCHBASIN
- GATE VALVE
- FIRE HYDRANT
- SANITARY SEWER
- STORM SEWER
- WATER MAIN
- DITCHLINE
- INLET/OUTLET HEADWALL
- END CAP
- WHEEL CHAIR RAMP

**NOTES:**

- CONTRACTOR TO VERIFY LOCATION OF ALL EXISTING UTILITIES WITH ALL UTILITY COMPANIES PRIOR TO DIGGING.
- CONTRACTOR TO CO-ORDINATE UTILITY RELOCATION WORKS WITH UTILITY COMPANIES AS REQUIRED.
- ALL CONSTRUCTION TO BE IN ACCORDANCE WITH DISTRICT OF SICAMOUS SUBDIVISION AND DEVELOPMENT SERVING BYLAW No 500 AND ALL OTHER RELEVANT LOCAL AND PROVINCIAL AGENCIES AS REQUIRED.

NO.	DATE	DESCRIPTION	BY	APP'D
0	18 MAY 2018	ISSUED FOR PERMITTING	AW	TP

REVISIONS

DESIGN	AGW
DRAWN	AGW
DATE	03-MAY-18
CHECKED	TRP

ISSUED FOR CROWN LAND TENURE APPLICATION

P.ENG

SCALES

HORIZ. = 1:500 25

VERT. = 1:50 2.5

**LAWSON**  
ENGINEERING & DEVELOPMENT SERVICES LTD.

825C LAKESHORE DRIVE W  
PO BOX 106 SALMON ARM, BC V1E 4N2

**Sicamous**

**HILLIER RD TO SILVER SANDS RD  
WATER-MAIN LOOPING  
PHASE 1  
SICAMOUS, BC  
EAGLE RIVER  
NATURAL BOUNDARY  
PLAN/PROFILE**

STATIONS 0+140 TO 0+390

PROJECT No. **91-2**

SHEET 1 OF 1

DWG. No. S-1 REV. No. 0