

124°29'30"W

124°29'0"W

124°28'30"W

124°28'0"W

54°27'0"N

54°26'30"N

54°26'0"N

54°27'0"N

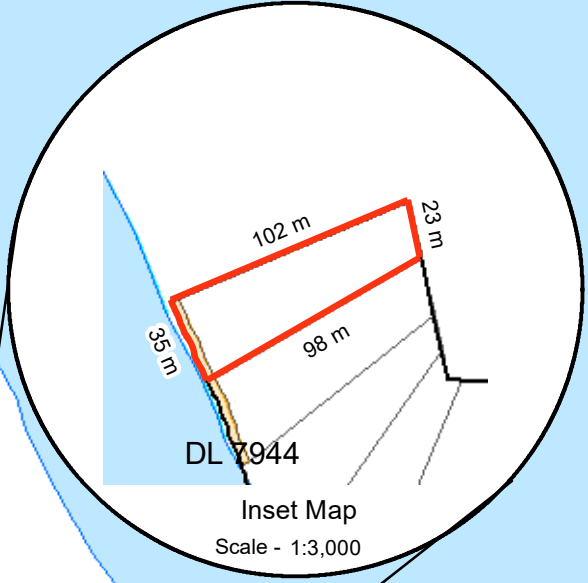
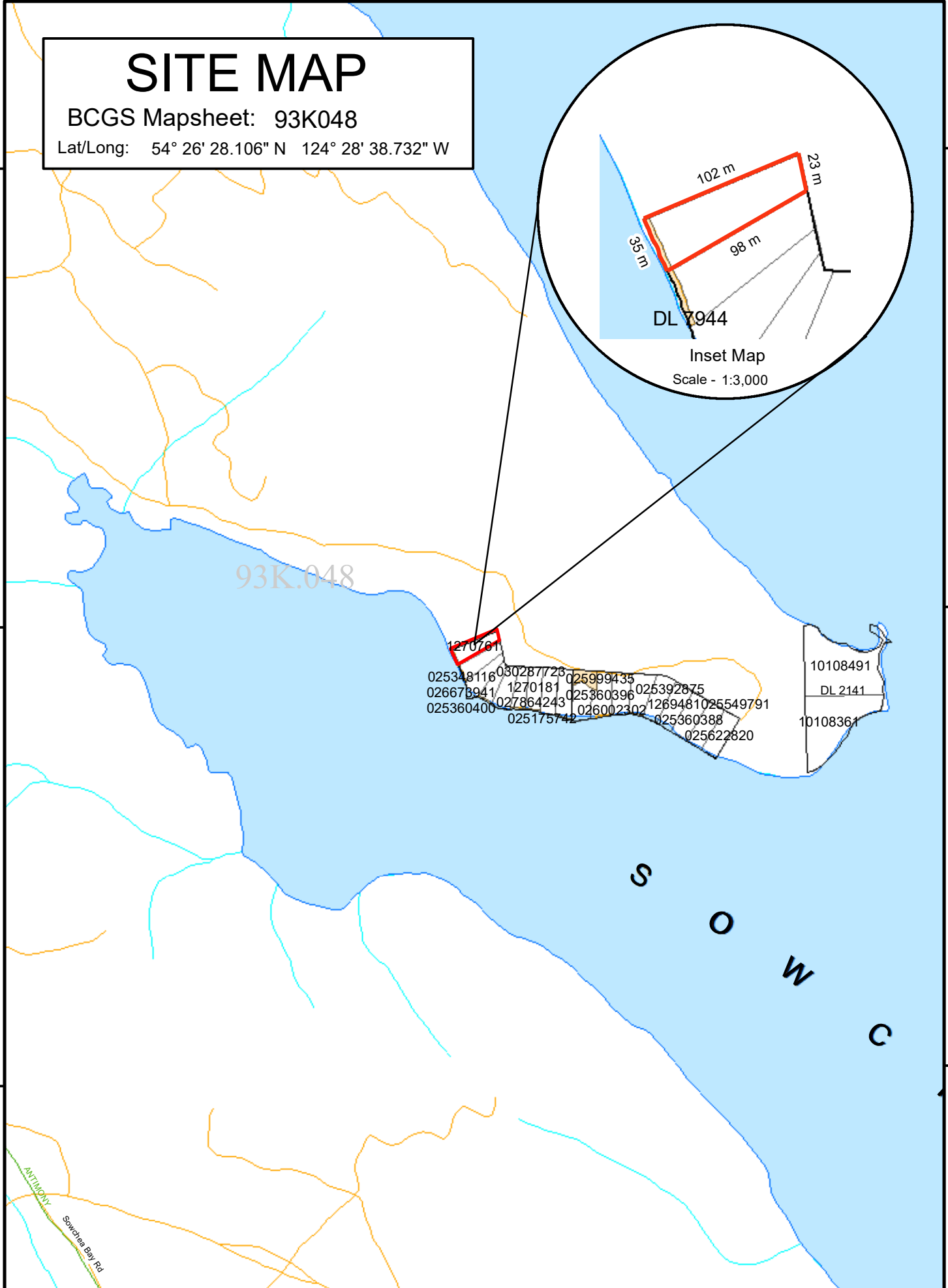
54°26'30"N

54°26'0"N

# SITE MAP

BCGS Mapsheet: 93K048

Lat/Long: 54° 26' 28.106" N 124° 28' 38.732" W



93K.048

1270761  
 025348116030287723025999435  
 026678941 1270181 025360396 025392875  
 025360400 027864243 026002302 1269481025549791  
 025175742 025360388 025622820  
 10108491  
 DL 2141  
 10108361

S  
O  
W  
C  
H  
E  
A  
B  
A  
Y

## File Number: 7400444

Site # 1 of 1 - APPLICATION Area = 0.289 Ha.

TYPE: CROWN GRANT

PURPOSE: RESIDENTIAL

SUBTYPE: DIRECT SALE

SUBPURPOSE: RECREATIONAL RESIDENTIAL

LOCATION: SOWCHEA BAY

IMAGERY: N/A

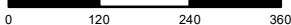
Produced by  
 Ministry of Forests, Lands &  
 Natural Resource Operations  
 & Rural Development  
 Northern Service Centre  
 FrontCounterBC  
 Date: August 27, 2018

Scale: 1:10,000 \*

\* if printed on 8.5X14 page

Projection: BC Albers  
Datum: NAD 83

Meters



### Legend

- Crown Land Application
- Primary Survey Parcel
- Subdivision
- Municipality
- Surveyed Rights of Way**
  - Surveyed Road R/W
  - Gas/Oil R/W District Lot
  - Power Transmission R/W
  - Gas/Oil R/W
  - Telecom R/W District Lot
  - Miscellaneous R/W
- Transportation Corridors**
  - Highway
  - Railway
  - Surveyed Road R/W
- Protected Areas**
  - Provincial Park
  - Protected Area
  - OIC Ecological Reserve
  - Recreation Area
- Base Mapping Features (20K)**
  - River or Stream
  - River or Stream - Dry
  - Lake
  - Reservoir - Definite
  - Glacier/Icefield
  - Contour - 20m interval
- Transportation - Lines (20K)**
  - Airfield
  - Road
  - Forest Service Road
  - Road Permit
  - Trail
  - Rail Line

All measurements are approximate.