

1 inch = 100 feet

SHUSWAP LAKE

MADE BT's
8" CEDAR S 69°E 7.5'
14" FIR S 21°W 10.0'

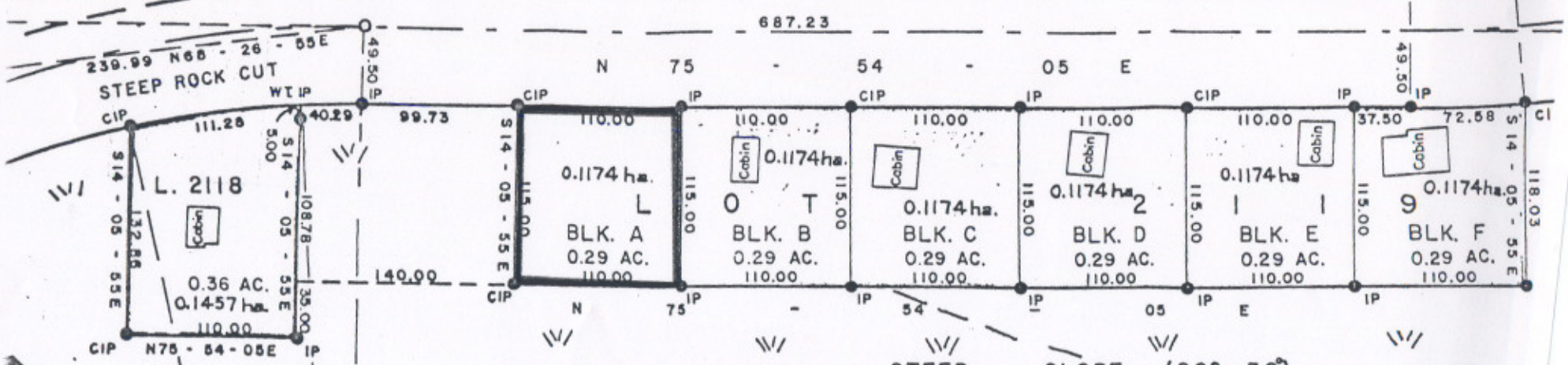


MADE BT's
6" CEDAR S 26°E 13.7
7" CEDAR S 85°E 11.4



MADE BT's
7" BIRCH S 34°W 18.8'
6" FIR S 70°E 10.0'

NOT FOR SALE Rents reserved and the



SCATTERED BIRCH AND FIR 2" - 18"
STEEP SLOPE (20° - 30°)
CEDAR 2" - 12"

