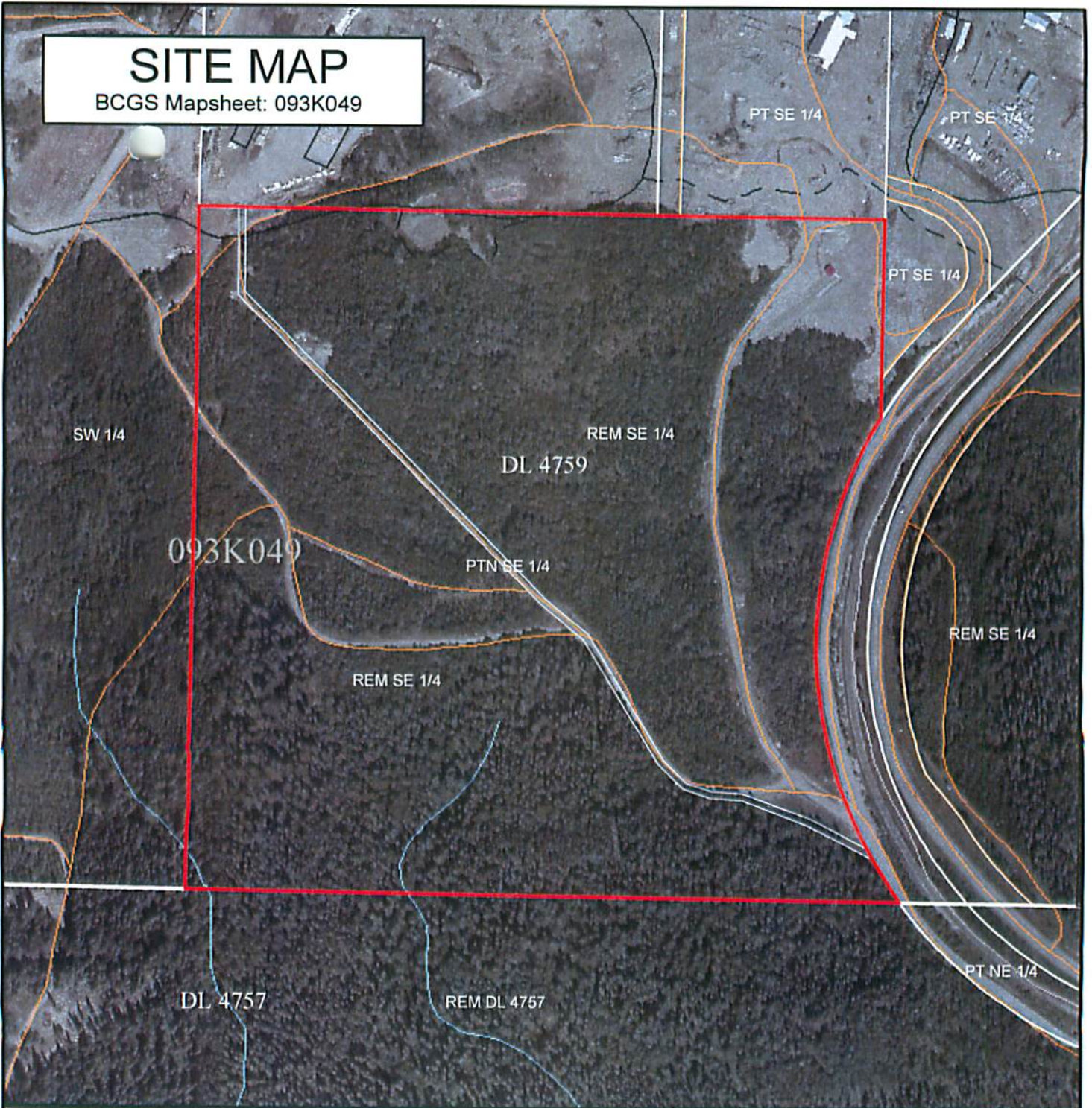


SITE MAP

BCGS Mapsheet: 093K049



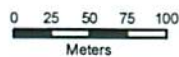
File Number: 7408670

Site # 1 of 1 - Application Area = 35.05 Ha

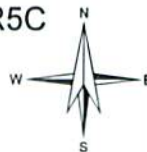
Part of the Remainder of the SE1/4 of DL 4759 R5C

Produced by
FrontCounter BC
Integrated Land Management Bureau
July 19, 2007

Scale - 1:5,000 *
* if printed on 8.5X11 page



Projection: UTM Zone 10
Datum: NAD 83



Legend

- | | |
|-----------------------------------|------------------------------|
| Crown Land Application | Water - Lines (20K) |
| Primary Survey Parcel | Rapids |
| Subdivision | River or Stream - Definite |
| Integrated Cadastre | River or Stream - Dry |
| Surveyed Rights of Way | River or Stream - Indefinite |
| Transportation Corridor | Dam - section Base |
| Provincial Park | Flooded Land - Inundated |
| Protected Area | Lake - Definite |
| OIC Ecological Reserve | Lake - Indefinite |
| Airfield | Lake - Intermittent |
| Road | Reservoir - Definite |
| Road (Gravel Undivided) - 1 Lane | Glacier |
| Road (Gravel Undivided) - 2 Lanes | Icefield |
| Trail | Island - Definite |
| Rail Line (Double Track) | Sand Bar |

All measurements are approximate.