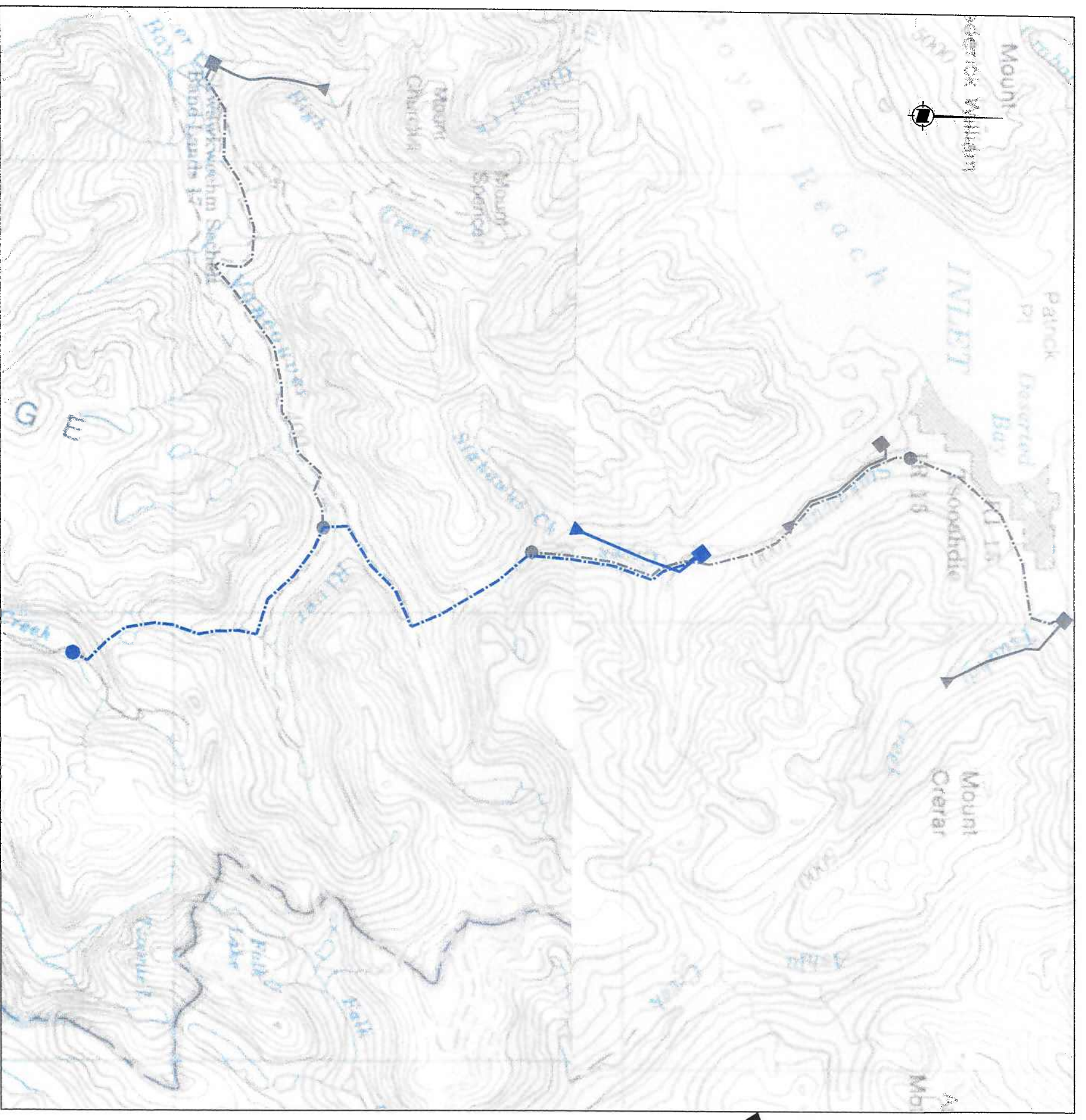







SOUTHWESTERN BRITISH COLUMBIA
N.T.S.



-  INTAKE
 -  PENSTOCK
 -  POWERHOUSE
 -  TRANSMISSION LINE
 -  INTERCONNECTION POINT (PROPOSED UPPER TZOONIE HYDROELECTRIC PROJECT TRANSMISSION LINE)
- BASE MAP: NTS 92J AND 92G
- SCALE 0 1000 2000 3000 4000 metres

HAWKEYE ENERGY CORPORATION	
UPPER STAKAWUS CREEK HYDROELECTRIC PROJECT	
LOCATION PLAN	
FIGURE 1	
DATE	AUG 2007
DWG. No.	
	R 0