

Site Plan Lots 1 & 2, Plan 5955, D.L.496, K.D.Y.D.

Scale 1:500



All distances are in metres.

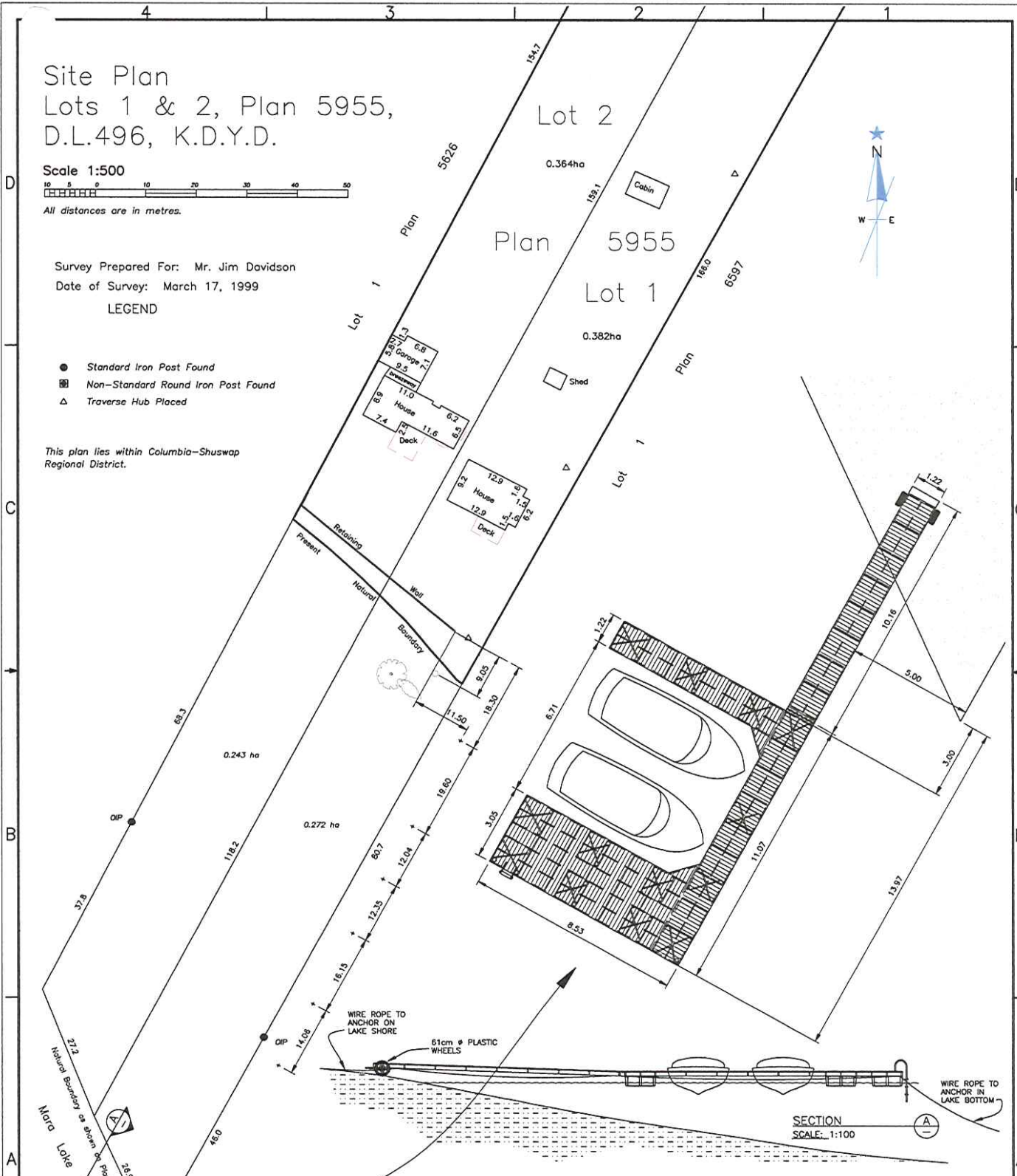
Survey Prepared For: Mr. Jim Davidson

Date of Survey: March 17, 1999

LEGEND

- Standard Iron Post Found
- Non-Standard Round Iron Post Found
- △ Traverse Hub Placed

This plan lies within Columbia-Shuswap
Regional District.



SECTION
SCALE: 1:100



THIS DRAWING AND INFORMATION CONTAINED THEREON AND THE DESIGN ARE EXHIBITED TO OTHERS WITH THE UNDERSTANDING THAT IT WILL BE CONSIDERED CONFIDENTIAL AND NOT USED FOR MANUFACTURING WITHOUT FORMAL CONSENT FROM THE COMPANY.

| | | | |
|---------------------------------|---------------|--------------------------|----------|
| DAVIDSON RESIDENCE WHARF | | | |
| 409 HIGHWAY 97A SICAMOUS | | DATE: OCT. 15 2007 | |
| DRAWN BY: BLAIR LUCKOW | | CHECKED BY: APPROVED BY: | |
| ASSEMBLY DWG. | PREVIOUS DWG. | DRAWING NO. | REVISION |
| SCALE: 1:500&1:100on17"x24" | | DAV.0000C | |
| DO NOT SCALE THIS DRAWING | | | |

| No. | DATE | REVISION | BY |
|-----|------|----------|----|
| | | | |