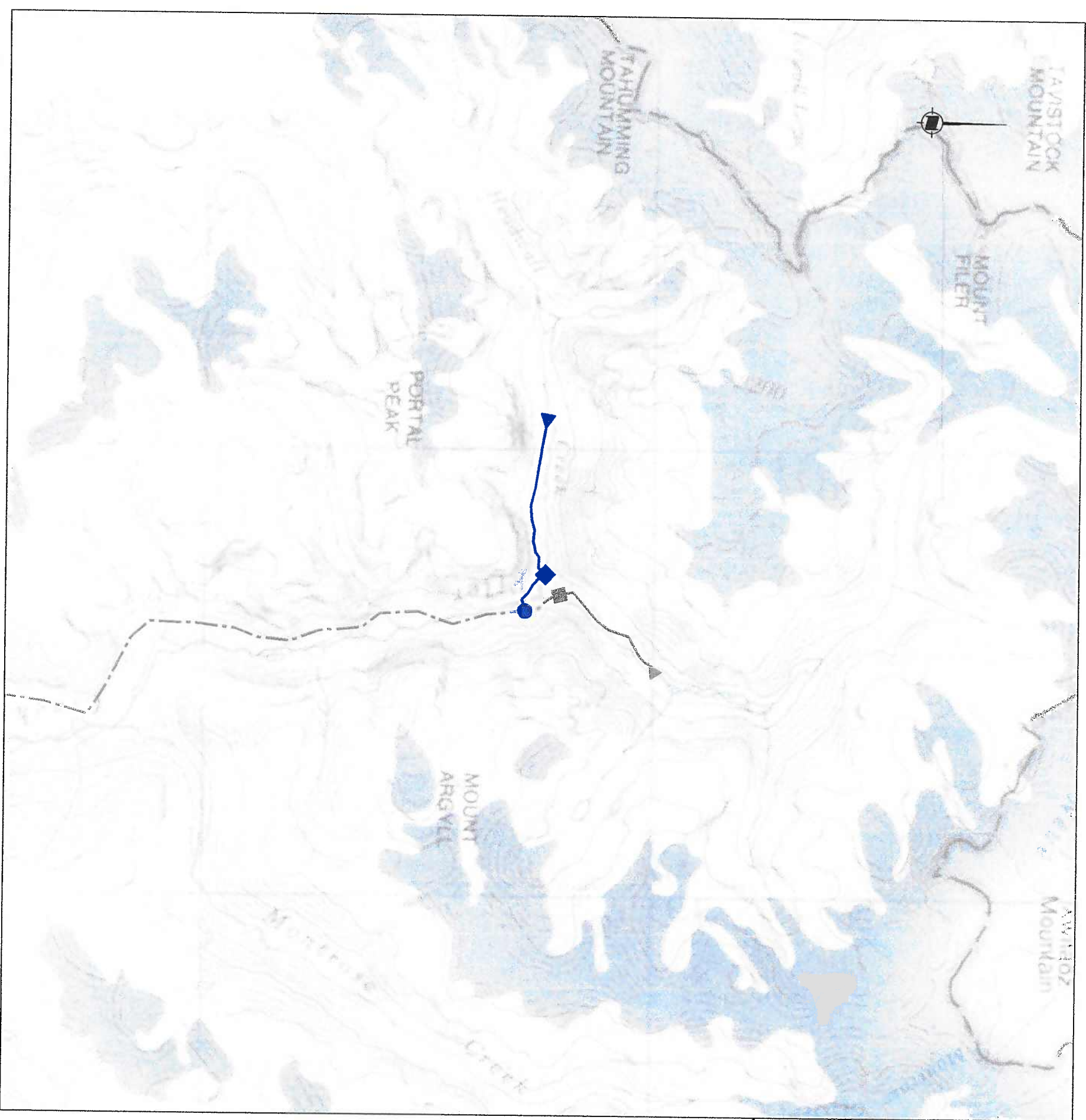







SOUTHWESTERN BRITISH COLUMBIA
N.T.S.



-  INTAKE
-  PENSTOCK
-  POWERHOUSE
-  TRANSMISSION LINE
-  INTERCONNECTION POINT (FLER CREEK HYDROELECTRIC PROJECT TRANSMISSION LINE)

BASE MAP: NTS 92K



HAWKEYE ENERGY CORPORATION

HEADWALL CREEK HYDROELECTRIC PROJECT
LOCATION PLAN

FIGURE 1

DATE	JAN 2008	DWG. No.		R
				0