

KEY PLAN



Metes and Bounds Description of Area 1

- From the Iron Pin at the North East Corner of Parcel A Plan B7064 for a distance of 65.960m at an astronomic azimuth of 270°44'44" to CP's north property line. This is the point of commencement for Area 1.
- Then at a distance of 10.0 m at 90 degrees from CP's existing north property line in a northerly direction.
 - Then 182.0 m parallel to CP's north property line in an easterly direction offset 10m from CP's north property line.
 - Then at a distance of 10.0 m at 90 degrees from CP's existing north property line in a southerly direction to a point on CP's north property line.
 - Then 182.0 m in a westerly direction along CP's north property line to the point of commencement.

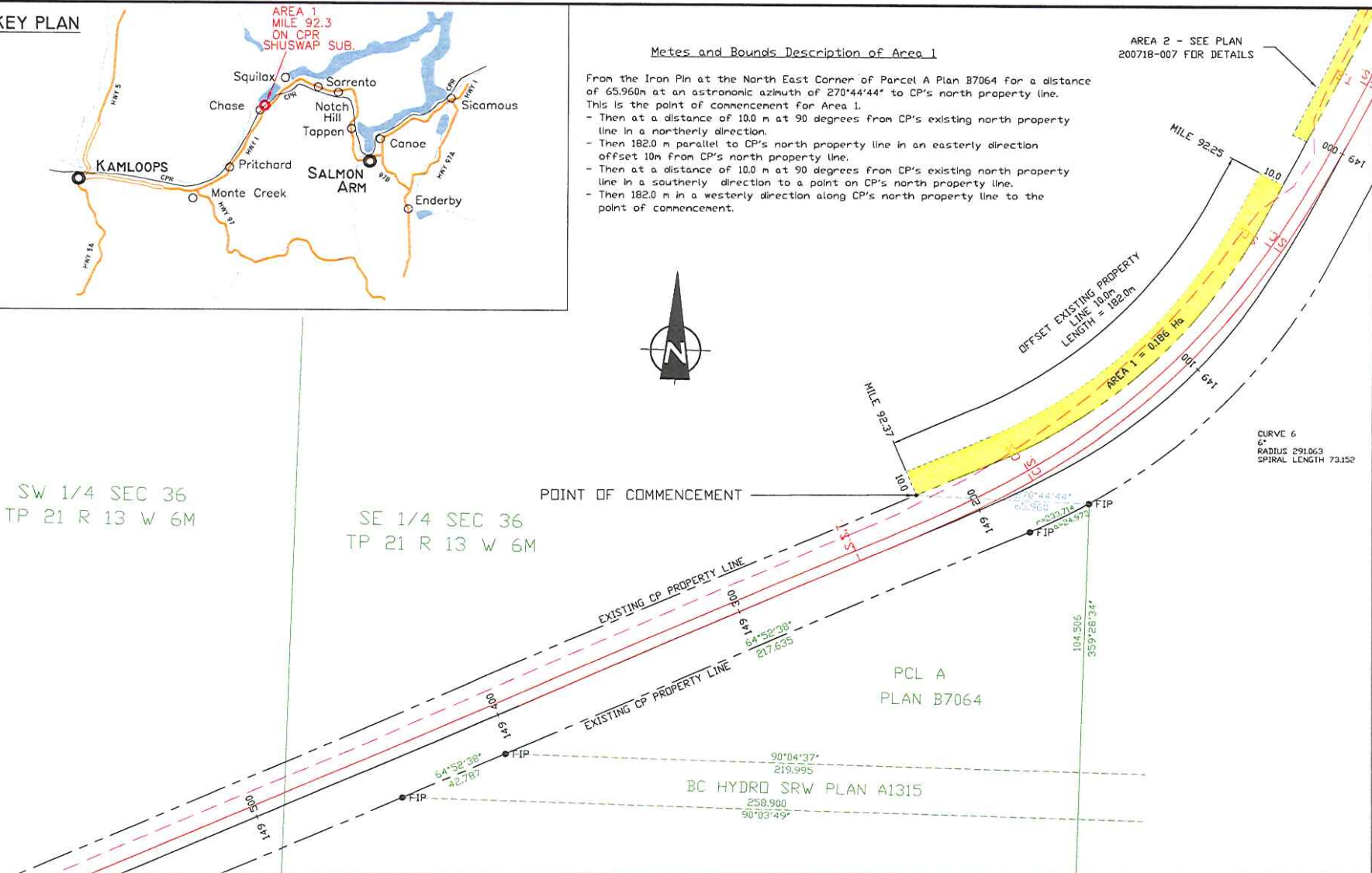
AREA 2 - SEE PLAN 200718-007 FOR DETAILS



SW 1/4 SEC 36
TP 21 R 13 W 6M

SE 1/4 SEC 36
TP 21 R 13 W 6M

POINT OF COMMENCEMENT



LEGEND

- EXISTING TRACKS
- PROPOSED TRACKS
- PROPOSED SLOPE STAKES
- LAND TO BE ACQUIRED (CROWN LAND)
- EXISTING PROPERTY LINE
- PROPOSED PROPERTY LINE
- FENCE LINE
- SURVEY CONTROL MONUMENT
- FIBRE OPTIC
- TELEPHONE POLE

NOTE : AZIMUTHS SHOWN ARE ASTRONOMIC AND ARE DERIVED FROM PLANS KAP55777 AND KAP52078



CANADIAN PACIFIC

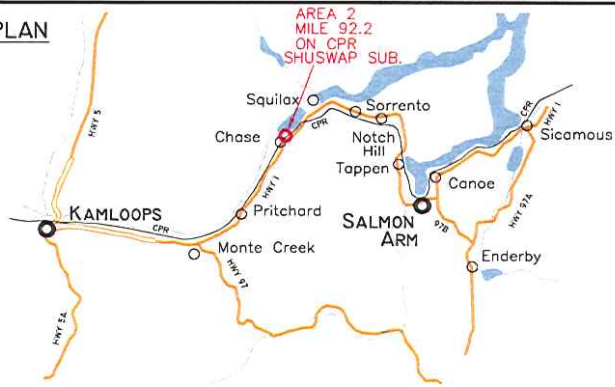
PROJECT SERVICES - WEST
Engineering Services - Structures & Projects

BC INTERIOR SERVICE AREA MILE 92 SHUSWAP SUB.

**CHASE EAST
PROPOSED SIDING EXTENSION
ADDITIONAL LAND REQUIRED - AREA 1**

DWG. BY: KSM	CHK BY:	OFFICE FILE: 200818006.DWG
		SCALE: NTS
ENGINEER:		DATE: MAR 20 2008
MGR. PROJECT SERVICES WEST		PLAN No. 200818-006 Rev. 0

KEY PLAN



SW 1/4 SEC 36
TP 21 R 13 W 6M

SE 1/4 SEC 36
TP 21 R 13 W 6M

POINT OF COMMENCEMENT

AREA 1 - SEE PLAN
200718-006 FOR DETAILS

PCL A
PLAN B7064

BC HYDRO SRW PLAN A1315

Meters and Bounds Description of Area 2

- From the Iron Pin at the North East Corner of Parcel A Plan B7064 for a distance of 162.416m at an astronomic azimuth of 28°28'22" to CP's north property line. This is the point of commencement for Area 2.
- Then at a distance of 6.0 m at 90 degrees from CP's existing north property line in a northerly direction.
 - Then 156.0 m parallel to CP's north property line in an easterly direction offset 6.0m from CP's north property line.
 - Then at a distance of 6.0 m at 90 degrees from CP's existing north property line in a southerly direction to a point on CP's north existing north property line.
 - Then 156.0 m in a westerly direction along CP's north property line to the point of commencement.

LEGEND

- EXISTING TRACKS
- PROPOSED TRACKS
- PROPOSED SLOPE STAKES
- LAND TO BE ACQUIRED (CROWN LAND)
- EXISTING PROPERTY LINE
- PROPOSED PROPERTY LINE
- FENCE LINE
- SURVEY CONTROL MONUMENT
- FIBRE OPTIC
- TELEPHONE POLE

NOTE : AZIMUTHS SHOWN ARE ASTRONOMIC AND ARE DERIVED FROM PLANS KAP55777 AND KAP52078



CANADIAN PACIFIC

PROJECT SERVICES - WEST
Engineering Services - Structures & Projects

BC INTERIOR SERVICE AREA MILE 92 SHUSWAP SUB.

**CHASE EAST
PROPOSED SIDING EXTENSION
ADDITIONAL LAND REQUIRED - AREA 2**

DWG. BY: KSM	CHK BY:	OFFICE FILE: 200818007.DWG
ENGINEER:		SCALE: NTS
MGR. PROJECT SERVICES WEST		DATE: MAR 20 2008
PLAN No.		Rev.
200818-007		0